

BAT

COMPASS

The Farmhouse

ON DAVID WHITES LANE





Turn-Key Modern Farmhouse

Welcome to The Farmhouse on David Whites Lane, a turn-key modern farmhouse that fuses modern and traditional style and delivers an elevated home program full of luxury amenities and designer details.

Conveniently located just 5 minutes from Southampton Village, Water Mill ocean beaches, and 10 minutes from Bridgehampton, The Farmhouse on David Whites Lane offers a rare opportunity to experience the luxury Hamptons lifestyle at an incredible value. Enjoy western facing sunsets over the reserve across the street.

Surrounded by Reserve

Surrounded by over 100 acres of farm reserve, this property boasts a lush, shy ~1-acre property adorned with specimen trees, mature plantings, hedged privacy and western-facing sunsets over the reserve.





Outdoor Living

The expansive property offers a large grass backyard, heated gunite pool, hot tub spa, and covered deck with additional dining and entertainment areas.





Great Room

To the right of the entry foyer, you enter the great room, an ideal fusion of comfort and sophistication, where the warmth of the fireplace meets an abundance of natural light.



Kitchen

The kitchen was designed for both style and flow, featuring a spacious island and French doors that open to the back patio for effortless outdoor entertaining.





Dining Areas

The open living room effortlessly extends into the dining area, with French doors leading to a large back deck that overlooks the pool and spa, creating a perfect indoor-outdoor flow.



First Floor Primary Bedroom

The first floor offers a stunning primary suite with vaulted ceilings, a luxurious bathroom with dual vanities, a freestanding tub, and a spacious shower.



First Floor

Completing the first floor is a den off the kitchen with french doors leading to the back porch, a guest room, and a full bathroom.





Second Floor

The second floor features two en-suite bedrooms, one with a balcony over looking the expansive backyard.





Lower Level

The lower level offers a recreation room, 5th bedroom, full bathroom and large laundry room.

FEATURES & AMENITIES

The Farmhouse on Davids Lane

General

- ~1 acre
- Abutting 100 Acres of Reserve
- 5 Bedrooms
- 5 Bathrooms
- 4,800 SF+/-
- Custom Millwork
- Fireplace

Outdoors:

- Heated Gunite Pool & Spa
- Lush Specimen Trees
- Mature Plantings
- Hedged Boundaries

First Level:

- Entry Foyer
- Kitchen
- Open-Concept Living and Dining Area
- Fireplace
- Den
- Primary Bedroom
- Guest Bedroom

Second Level:

- Second Primary En-Suite with Balcony
- Additional Guest Bedroom with En-Suite Bathroom

Lower Level:

- Recreational Space
- Built-In Storage
- Guest Bedroom
- Laundry Room
 - Two Sets of Washers/Dryers
 - Sink
- Full Bathroom

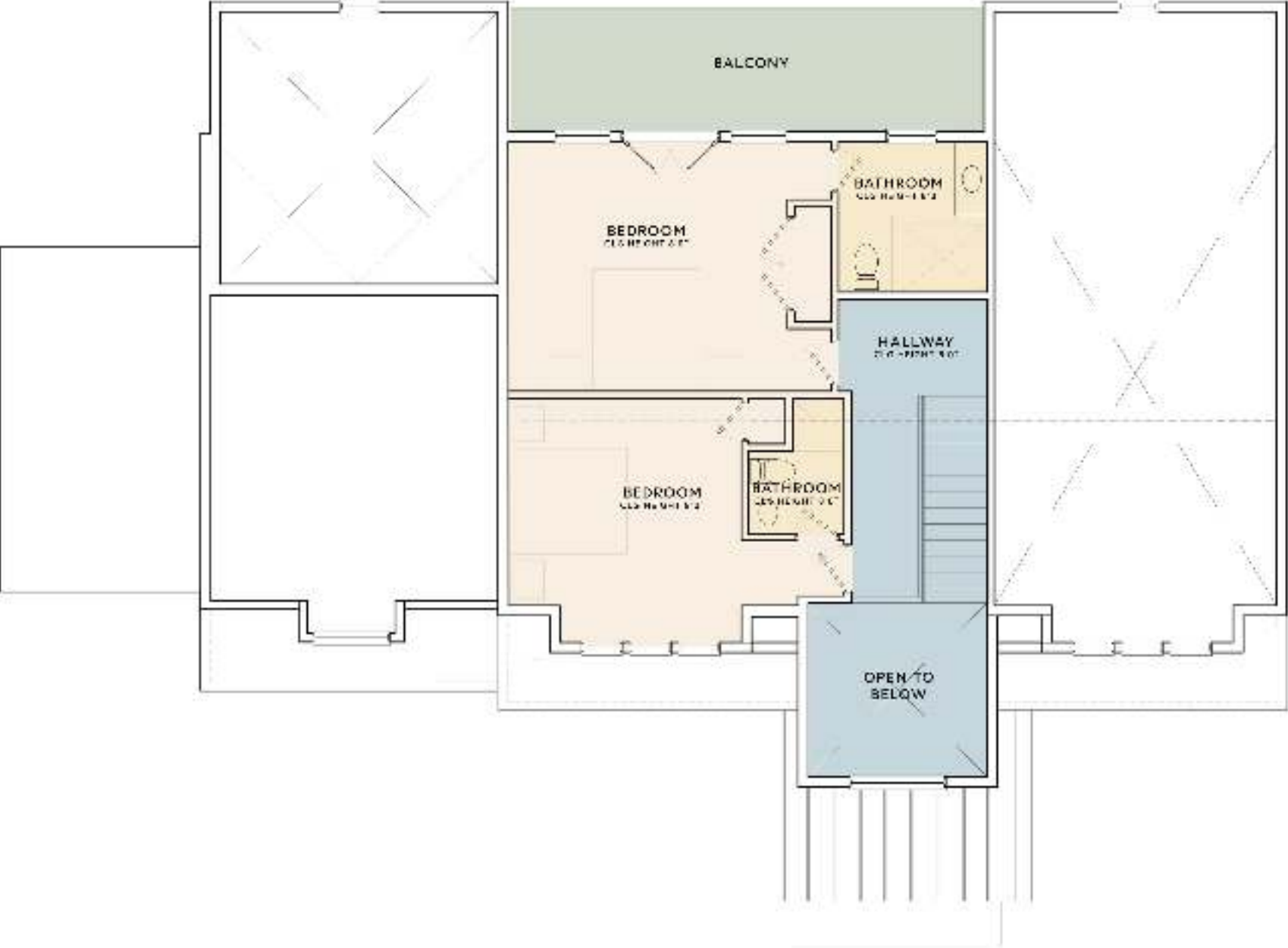




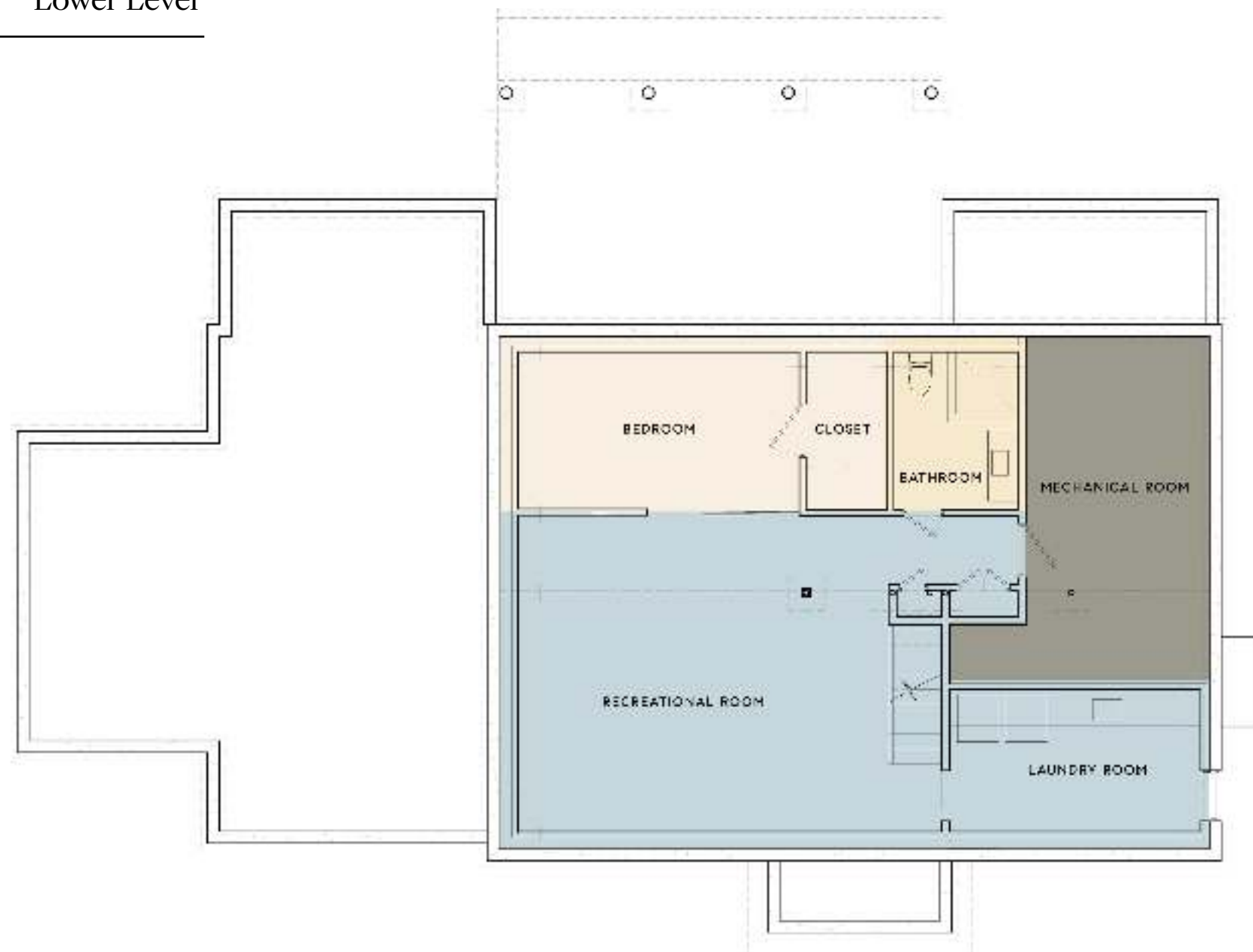
First Floor



Second Floor



Lower Level



Landscape Plan



scan to view brochure



scan to view web listing



BAT

631.255.6221

bat@compass.com

www.breitenbachadvisory.com